

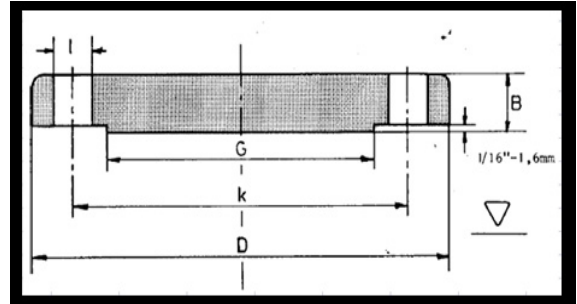
Blind Flanges

150#

Nominal Pipe Size	Outside Diam. D	Thickness Min. B	O.D. of Raised Face G	Number of Holes	Diam of Holes I	Bolt Circle Diam. K	Approx Weight Kg
1/2"	90	11.6	35.1	4	15.7	60.5	0.5
3/4"	100	13.2	42.9	4	15.7	69.9	0.7
1"	110	14.7	50.8	4	15.7	79.2	0.9
1.1/4"	115	16.3	63.5	4	15.7	88.9	1.2
1.1/2"	125	17.9	73.2	4	15.7	98.6	1.6
2"	150	19.5	91.9	4	19.1	120.7	2.5
2.1/2"	180	22.7	104.6	4	19.1	139.7	4
3"	190.2	24.3	127	4	19.1	152.4	4.9
3.1/2"	215	24.3	139.7	8	19.1	177.8	6.2
4"	230	24.3	157.2	8	19.1	190.5	7
5"	255	24.3	185.7	8	22.4	215.9	8.7
6"	280	25.9	215.9	8	22.4	241.3	11.3
8"	345	29	269.7	8	22.4	298.5	20
10"	405	30.6	323.9	12	25.4	362	29
12"	485	32.2	381	12	25.4	431.8	44
14"	535	35.4	412.8	12	28.4	476.2	59
16"	595	37	469.9	16	28.4	539.7	76
18"	635	40.1	533.4	16	31.8	577.8	94
20"	700	43.3	584.2	20	31.8	635	122
24"	815	48.1	692.2	20	35.1	749.3	185

Note: raised face are included in flange thickness

All dimensions are in mm

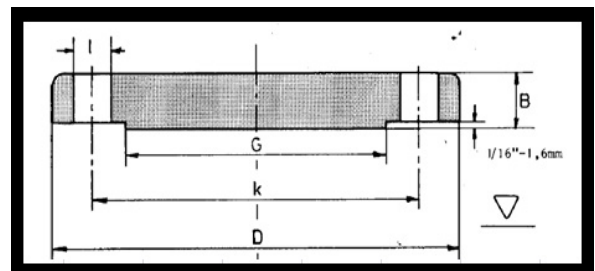


300#

Nominal Pipe Size	Outside Diam. D	Thickness Min. B	O.D. of Raised Face G	Number of Holes	Diam of Holes I	Bolt Circle Diam. K	Approx Weight Kg
1/2"	95	14.7	35	4	15.7	66.7	0.7
3/4"	115	16.3	42.9	4	19	82.5	1.2
1"	125	17	50.8	4	19	88.9	1.4
1.1/4"	135	19.5	63.5	4	19	98.4	1.8
1.1/2"	155	21.1	73.1	4	22.3	114.3	2.7
2"	165	22.7	91.9	8	19	127	3.2
2.1/2"	190	25.9	104.6	8	22.3	149.2	4.9
3"	210	29	127	8	22.3	168.3	7
3.1/2"	230	31.6	139.7	8	22.3	184.1	9
4"	255	32.2	157.2	8	22.3	200	12
5"	280	35.4	185.6	8	22.3	234.9	16
6"	320	36	215.9	12	22.3	269.9	21
8"	380	41.7	269.7	12	25.4	330.2	35
10"	445	48.1	323.8	16	28.4	387.3	54
12"	520	51.3	381	16	31.7	450.8	87.9
14"	585	54.4	412.7	20	31.7	514.3	105
16"	650	57.6	469.9	20	35	571.5	137
18"	710	60.8	533.4	24	35	628.6	175
20"	775	64	584.2	24	35	685.8	221
24"	915	70.3	692.1	24	41.1	812.8	340

Note: raised face are included in flange thickness

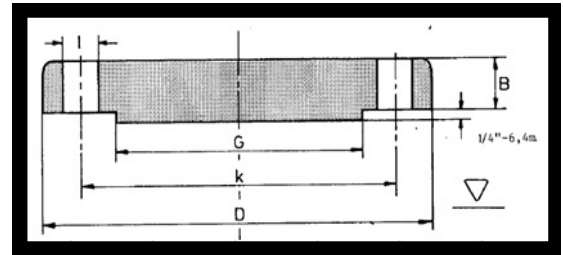
All dimensions are in mm



600#

Nominal Pipe Size	Outside Diam. D	Thickness Min. B	RF Height	O.D. of Raised Face G	Number of Holes	Diam of Holes I	Bolt Circle Diam. K	Approx Weight Kg
1/2"	95	14.3	7	35.1	4	15.7	66.5	0.8
3/4"	115	15.9	7	42.9	4	19.1	82.6	1.3
1"	125	17.5	7	50.8	4	19.1	88.9	1.6
1.1/4"	135	20.7	7	63.5	4	19.1	98.6	2.3
1.1/2"	155	22.3	7	73.2	4	22.4	114.3	3.3
2"	165	25.4	7	91.9	8	19.1	127	4.2
2.1/2"	190	28.6	7	104.6	8	22.4	149.4	6.2
3"	210	31.8	7	127	8	22.4	168.1	8.5
3.1/2"	230	35	7	139.7	8	25.4	184.2	11
4"	275	38.1	7	157.2	8	25.4	215.9	18
5"	330	44.5	7	185.7	8	28.4	266.7	30
6"	355	47.7	7	215.9	12	28.4	292.1	36
8"	420	55.6	7	269.7	12	31.8	349.3	65.9
10"	510	63.5	7	323.9	16	35.1	431.8	98
12"	560	66.7	7	381	20	35.1	489	124
14"	605	69.9	7	412.8	20	38.1	527.1	151
16"	685	76.2	7	469.9	20	41.1	603.3	214
18"	745	82.6	7	533.4	20	44.5	654.1	272
20"	815	88.9	7	584.2	24	44.5	723.9	349
24"	940	101.6	7	692.2	24	50.8	838.2	533

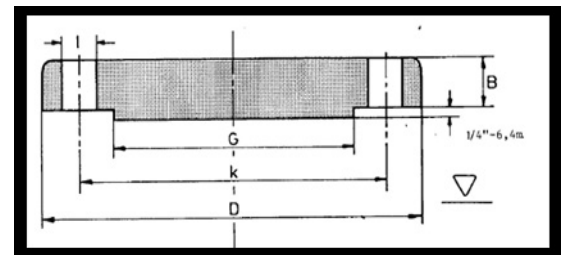
All dimensions are in mm



900#

Nominal Pipe Size	Outside Diam. D	Thickness Min. B	RF Height	O.D. of Raised Face G	Number of Holes	Diam of Holes I	Bolt Circle Diam. K	Approx Weight Kg
1/2"	120	22.3	7	35	4	22.3	82.5	1.8
3/4"	130	25.4	7	42.9	4	22.3	88.9	2.5
1"	150	28.6	7	50.8	4	25.4	101.6	3.6
1.1/4"	160	28.6	7	63.5	4	25.4	111.2	4.2
1.1/2"	180	31.8	7	73.1	4	28.4	123.9	5.8
2"	215	38.1	7	91.9	8	25.4	165.1	11
2.1/2"	245	41.3	7	104.6	8	28.4	190.5	14
3"	240	38.1	7	127	8	25.4	190.5	13.1
4"	290	44.5	7	157.2	8	31.7	234.9	27
5"	350	50.8	7	185.6	8	35	279.4	36.5
6"	380	55.6	7	215.9	12	31.7	317.5	48
8"	470	63.5	7	269.7	12	38.1	393.7	83
10"	545	69.9	7	323.8	16	38.1	469.9	122
12"	610	79.4	7	381	20	38.1	533.4	173
14"	640	85.8	7	412.7	20	41.1	558.8	206
16"	705	88.9	7	469.9	20	44.4	615.9	259
18"	785	101.6	7	533.4	20	50.8	685.8	367
20"	855	108	7	584.2	20	53.8	749.3	463
24"	1,040.00	139.7	7	692.1	20	66.5	901.7	876

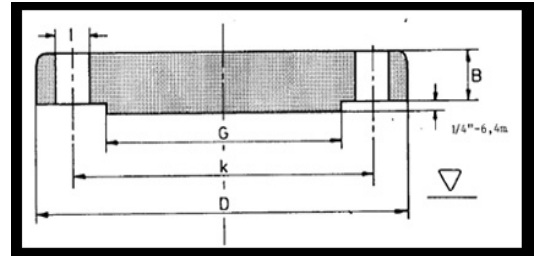
All dimensions are in mm



1500#

Nominal Pipe Size	Outside Diam. D	Thickness Min. B	RF Height	O.D. of Raised Face G	Number of Holes	Diam of Holes I	Bolt Circle Diam. K	Approx Weight Kg
1/2"	120	22.3	7	35	4	22.3	82.5	1.8
3/4"	130	2.4	7	42.9	4	22.3	88.9	2.5
1"	150	28.6	7	50.8	4	25.4	101.6	3.6
1.1/4"	160	28.6	7	63.5	4	25.4	111.1	4.2
1.1/2"	180	31.8	7	73.1	4	28.4	123.8	5.8
2"	215	38.1	7	91.9	8	25.4	165.1	11
2.1/2"	245	41.3	7	104.6	8	28.4	190.5	14
3"	265	47.7	7	127	8	31.7	203.2	20
4"	310	54	7	157.2	8	35	241.3	30
5"	375	73.1	7	185.6	8	41.1	292.1	59
6"	395	82.6	7	215.9	12	38.1	317.5	72
8"	485	92.1	7	269.7	12	44.4	393.7	122
10"	585	108	7	323.8	12	50.8	482.6	210
12"	675	123.9	7	381	16	53.8	571.5	316
14"	750	133.4	7	412.7	16	60.4	635	420
16"	825	146.1	7	469.9	16	66.5	704.8	560
18"	915	162	7	533.4	16	73.1	774.7	760
20"	985	177.8	7	584.2	16	79.2	831.8	965
24"	1170	203.2	7	692.1	16	91.9	990.6	1558

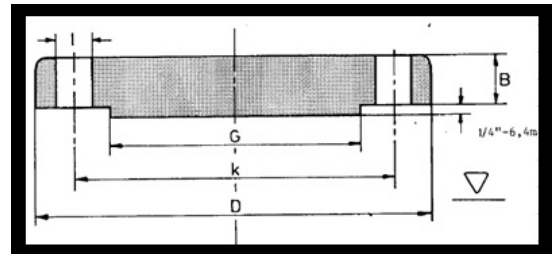
All dimensions are in mm



2500#

Nominal Pipe Size	Outside Diam. D	Thickness Min. B	O.D. of Raised Face G	Number of Holes	Diam of Holes I	Bolt Circle Diam. K	Approx Weight Kg
1/2"	135	30.2	35.1	4	22.4	88.9	3
3/4"	140	31.8	42.9	4	22.4	95.3	3.5
1"	160	35.00	50.8	4	25.4	108	5
1.1/4"	185	38.1	63.5	4	28.4	130	7.4
1.1/2"	205	44.5	73.2	4	31.8	146.1	10.4
2"	235	50.9	91.9	8	28.4	171.5	16
2.1/2"	265	57.2	104.6	8	31.8	196.9	23
3"	305	66.7	127	8	35.1	228.6	35
4"	355	76.2	157.2	8	41.1	273.1	54
5"	420	92.1	185.7	8	47.8	323.9	91
6"	485	108.00	215.9	8	53.8	368.3	141
8"	550	127.00	269.7	12	53.8	438.2	214
10"	675	165.10	323.9	12	66.5	539.8	411
12"	760	184.2	381	12	73.2	619.3	592

All dimensions are in mm



* There will may be typical error