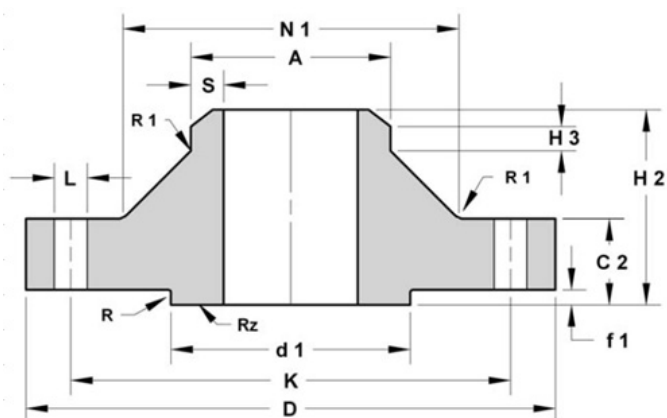


EN 1092-1:2001 /TYPE 11/B1

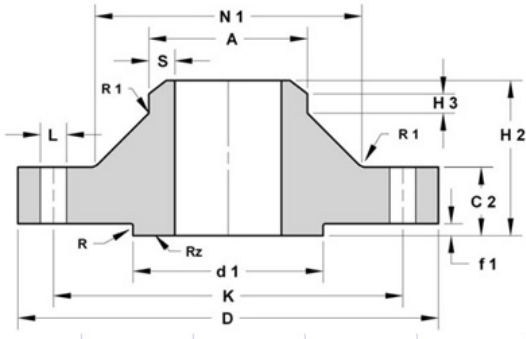
WELD-NECK FLANGES PN 6



DN	D	K	FORI/ BOLTING			A	C2	H2	H3	N1	R1	S	d1	f1	R	Kg.
			L	N DEGREE	SIZE											
10	75	50	11	4	M10	17.2	12	28	6	26	4	1.8	35	2	2.5	0.33
15	80	55	11	4	M10	21.3	12	30	6	30	4	2	40	2	2.5	0.39
20	90	65	11	4	M10	26.9	14	32	6	38	4	2.3	50	2	2.5	0.59
25	100	75	11	4	M10	33.7	14	35	6	42	4	2.6	60	2	2.5	0.74
32	120	90	14	4	M12	42.4	14	35	6	55	6	2.6	70	2	2.5	1
40	130	100	14	4	M12	48.3	14	38	7	62	6	2.6	80	2	2.5	1.18
50	140	110	14	4	M12	60.3	14	38	8	74	6	2.9	90	2	2.5	1.34
65	160	130	14	4	M12	76.1	14	38	9	88	6	2.9	110	2	2.5	1.67
80	190	150	18	4	M16	88.9	16	42	10	102	8	3.2	128	2	2.5	2.71
100	210	170	18	4	M16	114.3	16	45	10	130	8	3.6	148	2	3	3.24
125	240	200	18	8	M16	139.7	18	48	10	155	8	4	178	2	3	4.49
150	265	225	18	8	M16	168.3	18	48	12	184	10	4.5	202	2	3	5.15
200	320	280	18	8	M16	219.1	20	55	15	236	10	6.3	258	2	3	7.78
250	375	335	18	12	M16	273.00	22	60	15	290	12	7.1	312	2	3	10.8
300	440	395	22	12	M20	323.9	22	62	15	342	12	7.1	365	2	3	14
350	490	445	22	12	M20	355.6	22	65	15	385	12	7.1	415	2	3.5	18.5
400	540	495	22	16	M20	406.4	22	65	15	438	12	7.1	465	2	3.5	21.2
450	595	550	22	16	M20	457.00	22	68	15	492	12	7.1	520	2	3.5	25
500	645	600	22	20	M20	508.00	24	70	15	538	12	7.1	570	2	3.5	28.6
600	755	705	26	20	M24	610.00	30	70	16	640	12	7.1	670	2	3.5	43
700	860	810	26	24	M24	711.00	24	70	16	740	12	7.1	775	2	3.5	37.4
800	975	920	30	24	M27	813.00	24	70	16	842	12	7.1	880	2	3.5	46.1
900	1075	1020	30	24	M27	914.00	26	70	16	942	12	7.1	980	2	3.5	55.6
1000	1175	1120	30	28	M27	1,016.00	26	70	16	1045	16	7.1	1080	2	4	61.9

All dimensions are in mm

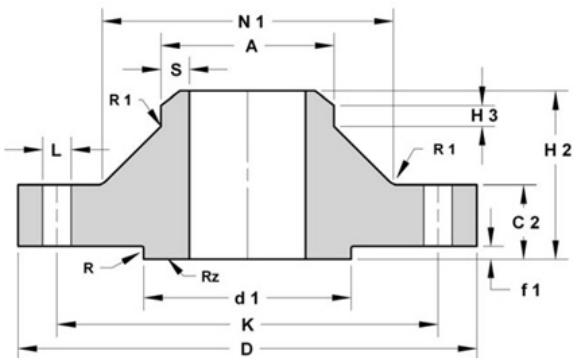
WELD NECK FLANGES PN 10



DN	D	K	FORI/ BOLTING			A	C2	H2	H3	N1	R1	S	d1	f1	R	Kg.
			L	N DEGREE	SIZE											
200	340	295	22	8	M20	219.1	24	62	16	234	10	6.3	268	2	3.0	11.3
250	395	350	22	12	M20	273	26	68	16	292	12	6.3	320	2	3.0	14.7
300	445	400	22	12	M20	323.9	26	68	16	342	12	7.1	370	2	3.0	17.4
350	505	460	22	16	M20	355.6	26	68	16	385	12	7.1	430	2	3.5	23.6
400	565	515	26	16	M24	406.4	26	72	16	440	12	7.1	482	2	3.5	28.6
450	615	565	26	20	M24	457	28	72	16	488	12	7.1	532	2	3.5	34
500	670	620	26	20	M24	508	28	75	16	542	12	7.1	585	2	3.5	38.1
600	780	725	30	20	M27	610	28	80	18	642	12	7.1	685	2	3.5	44.6
700	895	840	30	24	M27	711	30	80	18	746	12	8.0	800	2	3.5	62.4
800	1015	950	33	24	M30	913	32	90	18	850	12	8.0	905	2	3.5	84.1
900	1115	1050	33	28	M30	914	34	95	20	950	12	10.0	1005	2	3.5	98.5
1000	1230	1160	36	28	M33	1016	34	95	20	1052	16	10.0	1110	2	4.0	115

All dimensions are in mm

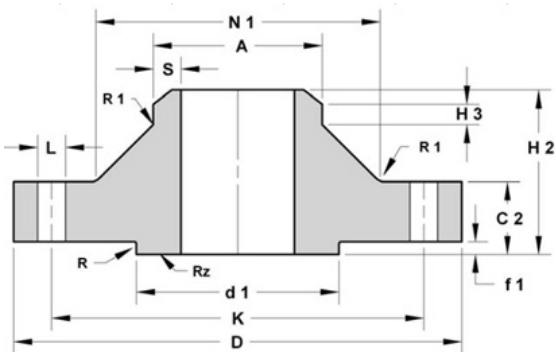
WELD NECK FLANGES PN 16



DN	D	K	FORI/ BOLTING			A	C2	H2	H3	N1	R1	S	d1	f1	R	Kg.
			L	N DEGREE	SIZE											
50	165	125	18	4	M 16	60.3	18	45	8	74	5	2.9	102	2	2.5	2.53
65	185	145	18	4	M 16	76.1	18	45	10	92	6	2.9	122	2	2.5	3.06
65	185	145	18	8	M 16	76.1	18	45	10	92	6	2.9	122	2	2.5	3.06
80	200	160	18	8	M 16	88.9	20	50	10	105	6	3.2	138	2	2.5	3.7
100	220	180	18	8	M 16	114.3	20	52	12	131	8	3.6	158	2	3.0	4.62
125	250	210	18	8	M 16	139.7	22	55	12	156	8	4.0	188	2	3.0	6.3
150	285	240	22	8	M 20	168.3	22	55	12	184	10	4.5	212	2	3.0	7.75
200	340	295	22	12	M20	219.1	24	62	16	235	10	6.3	268	2	3.0	11
250	405	355	26	12	M24	273.0	26	70	16	292	12	6.3	320	2	3.0	15.6
300	460	410	26	12	M24	323.9	28	78	16	344	12	7.1	378	2	3.0	22
350	520	470	26	16	M24	355.6	30	82	16	390	12	8.0	438	2	3.5	31.2
400	580	525	30	16	M27	406.4	32	85	16	445	12	8.0	490	2	3.5	39.3
450	640	585	30	20	M27	457.0	40	87	16	490	12	8.0	550	2	3.5	54.5
500	715	650	33	20	M30	508.0	44	90	16	548	12	8.0	610	2	3.5	74
600	840	770	36	20	M33	610.0	54	95	18	652	12	8.8	725	2	3.5	116.5
700	910	840	36	24	M33	711.0	36	100	18	755	12	8.8	795	2	3.5	77
800	1025	950	39	24	M36	813.0	38	105	20	855	12	10.0	900	2	3.5	101
900	1125	1050	39	28	M36	914.0	40	110	20	955	12	10.0	1000	2	3.5	122
1000	1255	1170	42	28	M39	1016.0	42	120	22	1058	16	10.0	1115	2	4.0	162

All dimensions are in mm

WELD NECK FLANGES PN 25

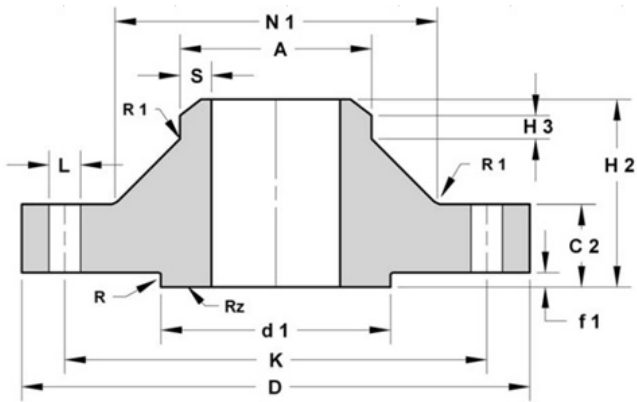


DN	D	K	FORI/ BOLTING			A	C2	H2	H3	N1	R1	S	d1	f1	R	Kg.
			L	N DEGREE	SIZE											
200	360	310	26	12	M24	219.1	30	80	16	244	10	6.3	278	2	3.0	17
250	425	370	30	12	M27	273.0	32	88	18	298	12	7.1	335	2	3.0	24
300	485	430	30	16	M27	323.9	34	92	18	352	12	8.0	395	2	3.0	31.2
350	555	490	33	16	M30	355.6	38	100	20	398	12	8.0	450	2	3.5	47.2
400	620	550	36	16	M33	406.4	40	110	20	452	12	8.8	505	2	3.5	61.7
450	670	600	36	20	M33	457.0	46	110	20	500	12	8.8	555	2	3.5	75.5
500	730	660	36	20	M33	508.0	48	125	20	558	12	10.0	615	2	3.5	96.5
600	845	770	39	20	M36	610.0	58	125	20	660	12	11.0	720	2	3.5	138.6

700	960	875	42	24	M39	711.0	46	125	20	760	12	12.5	820	2	3.5	136
800	1085	990	48	24	M45	813.0	50	135	22	864	12	14.2	930	2	3.5	186
900	1185	1090	48	28	M45	914.0	54	145	24	968	12	16.0	1030	2	3.5	237
1000	1320	1210	56	28	M52	1016.0	58	155	24	1070	16	17.5	1140	2	4.0	307

All dimensions are in mm

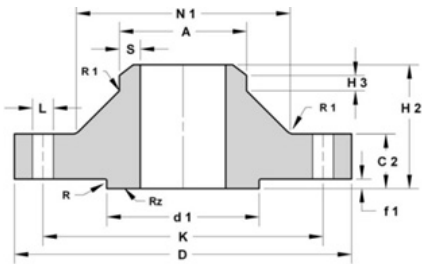
WELD-NECK FLANGE PN 40



DN	D	K	FORI/ BOLTING			A	C2	H2	H3	N1	R1	S	d1	f1	R	Kg.
			L	N DEGREE	SIZE											
10	90	60	14	4	M 12	17.2	16	35	6	28	4	1.8	40	2	2.5	0.66
15	95	65	14	4	M 12	21.3	16	38	6	32	4	2.0	45	2	2.5	0.74
20	105	75	14	4	M 12	26.9	18	40	6	40	4	2.3	58	2	2.5	1
25	115	85	14	4	M 12	33.7	18	40	6	46	4	2.6	68	2	2.5	1
32	140	100	18	4	M 16	42.4	18	42	6	56	6	2.6	78	2	2.5	1.88
40	150	110	18	4	M 16	48.3	18	45	7	64	6	2.6	88	2	2.5	2
50	165	125	18	4	M 16	60.3	20	48	8	75	6	2.9	102	2	2.5	2.82
65	185	145	18	8	M 16	76.1	22	52	10	90	6	2.9	122	2	2.5	3.74
80	200	160	18	8	M 16	88.9	24	58	12	105	8	3.2	138	2	2.5	4.75
100	235	190	22	8	M 20	114.3	24	65	12	134	8	3.6	162	2	3.0	6.5
125	270	220	26	8	M 24	139.7	26	68	12	162	8	4.0	188	2	3.0	9
150	300	250	26	8	M 24	168.3	28	75	12	192	10	4.5	218	2	3.0	11.5
200	375	320	30	12	M27	219.1	34	88	16	244	10	6.3	285	2	3.0	21
250	450	385	33	12	M30	273.0	38	105	18	306	12	7.1	345	2	3.0	34
300	515	450	33	16	M30	323.9	42	115	18	362	12	8.0	410	2	3.0	47.5
350	580	510	36	16	M33	355.6	46	125	20	408	12	8.8	465	2	3.5	68.1
400	660	585	39	16	M36	406.4	50	135	20	462	12	11.0	535	2	3.5	96.5
450	685	610	39	20	M36	457.0	57	135	20	500	12	12.5	560	2	3.5	105
500	755	670	42	20	M39	508.0	57	140	20	562	12	14.2	615	2	3.5	130.5
600	890	795	48	20	M45	610.0	72	150	20	666	12	16.0	735	2	3.5	211.5

All dimensions are in mm

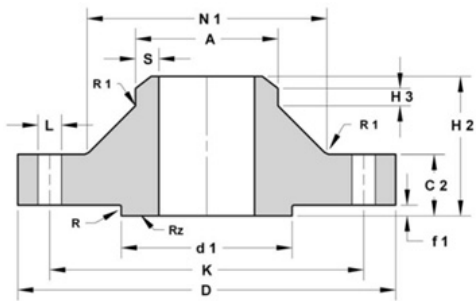
WELD-NECK FLANGES PN 63



DN	D	FORI/ BOLTING				A	C2	H2	H3	N1	R1	S	d1	f1	R	Kg.
		K	L	N DEGREE	SIZE											
50	180	135	22	4	M 20	60.3	26	62	10	82	6	2.9	102	2	2.5	4.5
65	205	160	22	8	M 20	76.1	26	68	12	98	6	3.2	122	2	2.5	5.5
80	215	170	22	8	M 20	88.9	28	72	12	112	8	3.6	138	2	2.5	6.5
100	250	200	26	8	M 24	114.3	30	78	12	138	8	4.0	162	2	3	9.5
125	295	240	30	8	M 27	139.7	34	88	12	168	10	4.5	188	2	3	14.5
150	345	280	33	8	M 30	168.3	36	95	12	202	10	5.6	218	2	3	21.5
200	415	345	36	12	M33	219.1	42	110	16	256	12	7.1	285	2	3	34
250	470	400	36	12	M33	273.0	46	125	18	316	12	8.8	345	2	3	48
300	530	460	36	16	M33	323.9	52	140	18	372	12	11.0	410	2	3	67.5
350	600	525	39	16	M36	355.6	56	150	20	420	12	12.5	465	2	3.5	97.5
400	670	585	42	16	M39	406.4	60	160	20	475	12	14.2	535	2	3.5	129
500	800	705	48	20	M45	457.0					12		615	2	3.5	
600	930	820	56	20	M52						15		735	2	3.5	

All dimensions are in mm

WELD NECK FLANGES 100



DN	D	K	FORI/ BOLTING			A	C2	H2	H3	N1	R1	S	d1	f1	R	Kg.
			L	N DEGREE	SIZE											
10	100	70	14	4	M 12	17.2	20	45	6	34	4	2.0	40	2	2.5	1
15	105	75	14	4	M 12	21.3	20	45	8	42	4	2.6	45	2	2.5	1
20	130	90	18	4	M 16	26.9	22	48	8	52	4	2.6	58	2	2.5	2
25	140	100	18	4	M 16	33.7	24	58	8	62	6	2.9	68	2	2.5	2.5
32	155	110	22	4	M 20	42.4	24	60	10	70	6	2.9	78	2	2.5	3
40	170	125	22	4	M 20	48.3	26	62	10	90	6	3.2	88	2	2.5	4
50	195	145	26	4	M 24	60.3	28	68	12	108	6	3.6	102	2	2.5	6
65	220	170	26	8	M 24	76.1	30	76	12	120	8	4.0	122	2	2.5	7.5
80	230	180	26	8	M 24	88.9	32	78	12	150	8	5.0	138	2	2.5	9
100	265	210	30	8	M 27	114.3	36	90	12	180	8	6.3	162	2	3	13
125	315	250	33	8	M 30	139.7	40	105	12	210	10	7.1	188	2	3	21
150	355	290	33	12	M30	168.3	44	115	16	278	10	10.0	218	2	3	28
200	430	360	36	12	M33	219.1	52	130	18	340	12	12.5	285	2	3	50
250	505	430	39	12	M36	273.0	60	157	18	400	12	14.2	345	2	3	81
300	585	500	42	16	M39	323.9	68	170	20	460	12	16.0	410	2	3	117.97
350	655	560	48	16	M45	355.6	74	189					465	2	3.5	167.25
400	715	620	48	16	M45	406.4							535	2	3.5	
500	870	760	56	20	M52	508.0										

All dimensions are in mm

* There will may be typical error